

[from Stations]

**From Shinagawa Station**

5 minutes by Free Shuttle Bus from both JR & Keikyū Line Shinagawa Station, Takanawa Exit or 10 minutes walk to the hotel.

**From Kita-Shinagawa Station**

Approximately 5 minutes walk from Keikyū Line Kita-Shinagawa Station.

[from Airports]

**From Haneda Airport**

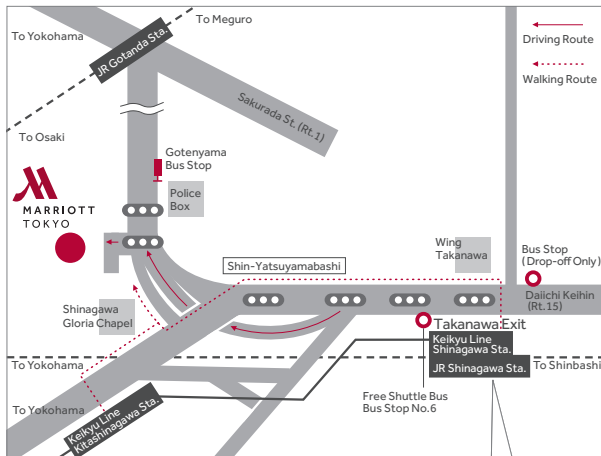
Approximately 30 minutes by Airport Limousine Bus or 20 minutes by Keikyū Line.

**From Narita Airport**

Approximately 100 minutes by Airport Limousine Bus.

**TOKYO MARRIOTT HOTEL**

4-7-36 Kitashinagawa,  
Shinagawa-ku, Tokyo 140-0001 Japan  
T: +81.3.5488.3911



(A) Free Shuttle Bus  
Bus Stop No.6

(B) Free Shuttle Bus  
(Drop-Off Only)



